

A stylized illustration of a human lung in shades of blue and white. A magnifying glass with a black handle and frame is positioned over the lower part of the lung, focusing on a detailed view of the bronchial tree. The background is white with scattered blue circles of various sizes.

**GO<sub>2</sub>** FOUNDATION  
FOR LUNG CANCER

THE

# Magnifying LeNS

LEARNING  
NEW SCIENCE  
QUARTERLY

**JANUARY 2021**

# What is “The Magnifying LeNS?”

The Magnifying LeNS is our new quarterly highlights of the lung cancer treatment landscape. In this series, you will receive articles written by our Science & Research team intended to educate and empower patients on the latest trends in clinical trials, biomarker testing, GO2 Foundation-driven research, and FDA-approved treatment options. In addition, we expect future issues to recap practice-changing advances and highlights from major scientific conferences.

# How Biomarker Testing Affects Patients



In today's lung cancer care landscape, biomarker testing has become a crucial part of the treatment decision for many oncologists. Targeted therapies can be more effective than chemotherapy for patients with driver mutations including approved medications for patients with different driver mutations including ROS1, MET, NTRK, and RET.

[READ MORE](#)

# Trends in Treatment of EGFR+ NSCLC after Progression Following Tagrisso Treatment



Approximately 30% of Non-Small Cell Lung Cancers (NSCLC) have an EGFR mutation. For these patients EGFR targeted therapy has greatly increased survival. Tagrisso (osimertinib) has become the drug of choice for EGFR+ (positive) NSCLC treatment, however, Tagrisso resistance remains a problem with a significant group of EGFR+ patients.

[READ MORE](#)

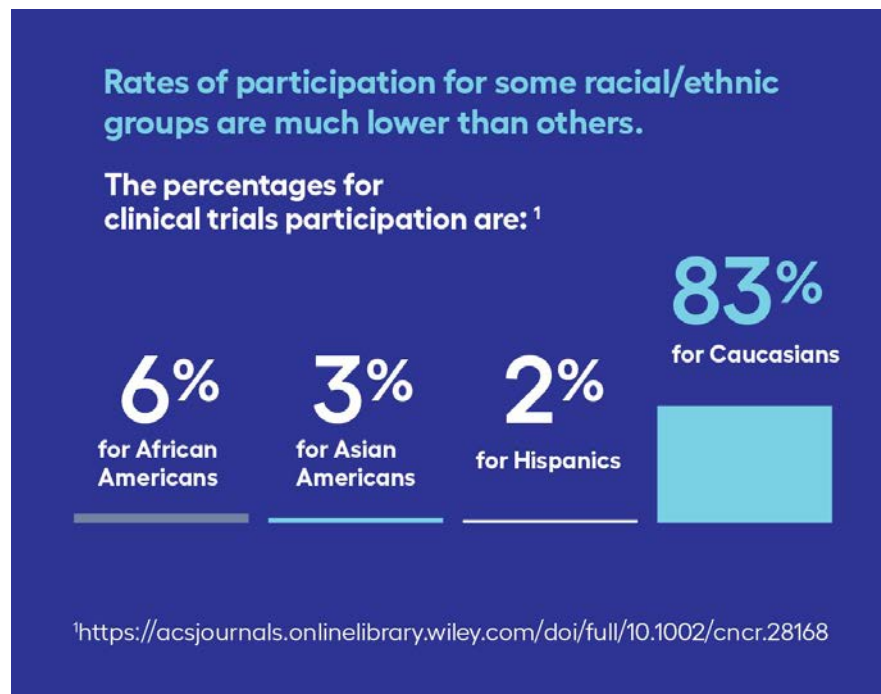
# Clinical Trials FAQ



Patients often hear the words clinical trial and don't know what to expect or sometimes even what a clinical trial is. GO2 Foundation has put together a list of frequently asked questions surrounding clinical trials for you to have a better understanding of how clinical trials relate to your treatment journey.

[READ MORE](#)

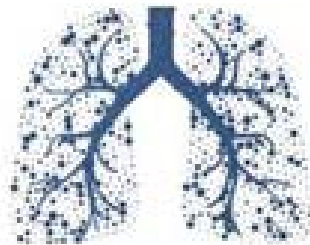
# Learning About Everyone: The Importance of Advancing Inclusive Research



Are scientists learning enough about how people just like you respond to new treatments? You may be surprised. Clinical trial participation rates among people with cancer in the United States are low, with only about 8% of those diagnosed joining a trial.

[READ MORE](#)

# Lung Cancer Registry: Partnering with Patients and Caregivers to Drive Research Forward

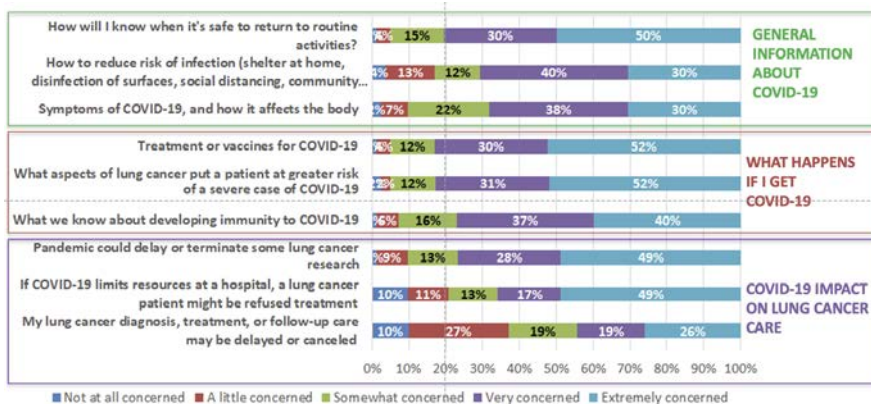


**LUNG CANCER**  
REGISTRY

The Lung Cancer Registry (LCR), created by GO2 Foundation for Lung Cancer, is a global online database that was launched in 2016. The LCR was designed so that patients could contribute their individual experiences with lung cancer through survey questions asking about the patient, their medical history and diagnosis, treatment, outcomes, and quality of life. By joining our growing registry, represented by over 2,300 members in more than 40 countries and 6 continents across the world, you are giving researchers access to crucial data that will help make new discoveries.

[READ MORE](#)

# When Worlds Collide: Research at the Intersection of COVID-19 and Lung Cancer



2020 started off on a high note – we were celebrating the largest single year drop in cancer mortality. Then COVID-19 showed up and the cancer world was put on high alert. Patients with lung cancer are particularly at risk, with much higher mortality rates from the virus compared to the general public.

[READ MORE](#)



# THANK YOU TO OUR SPONSORS



# About Us

Founded by patients and survivors, GO2 Foundation for Lung Cancer transforms survivorship as the world's leading organization dedicated to saving, extending, and improving the lives of those vulnerable, at risk, and diagnosed with lung cancer.

**DONATE TODAY!**

# Contact Us

Email: [support@go2foundation.org](mailto:support@go2foundation.org) | HelpLine: 1-800-298-2436 (9-5 EDT)

## **Washington, DC**

Phone: 202-463-2080

## **San Francisco Bay Area**

Phone: 650-598-2857