

IMPACT REPORT 2024





Confronting Lung Cancer Starts Here®

Dear Friends,

Thanks to your generosity and belief in our mission, 2024 was a year of meaningful impact to relentlessly confront lung cancer on every front, every day, for everyone. We continued to focus on accelerating early detection, expanding access to personalized treatment, and empowering our community of people at risk for and impacted by the disease.

Thanks to you, we were able to achieve the following:

- Provided support services to more than 125,000 people across 45 states and 25 countries from our HelpLine, LungMATCH treatment and trial navigation program, the Lung Cancer Living Room®, and free educational resources.
- Added over 50 screening and care Centers of Excellence to our national network of more than 900 local community hospitals, clinics, and academic and VA medical centers.
- Secured \$25 million in new federal research funding and celebrated the House passage of the Women and Lung Cancer Research & Preventive Services Act – a major legislative win.
- Reached over 100 million people with our awareness campaigns ensuring more people know GO2 is their “go-to” and the importance of early detection.

This progress is only possible because of people like you. But the challenges ahead – including deep federal research cuts – make your continued support even more critical.

Together, we can ensure that innovation, advocacy, and compassion continue to drive our movement forward. Thank you for being such an essential part of our work. Confronting lung cancer starts here®!

With deepest gratitude,

A handwritten signature in black ink, appearing to read "Laurie", with a stylized flourish at the end.

Laurie Fenton Ambrose
President and CEO



Confronting
Lung Cancer
Starts

HERE®



Strategic Focus to Transform Survival

Vision

A world without lung cancer.

Mission

GO2 for Lung Cancer relentlessly confronts lung cancer on every front, every day, for every one. As the nation's leading lung cancer advocacy organization that was founded by patients and survivors, we are dedicated to increasing survival and quality of life for those at risk, diagnosed, and living with lung cancer.

Our Goals

Accelerate shift
from late to early
stage detection.

Build and empower
our community.

Drive more
personalized treatment
and access to care.

Increase attention
and understanding
of the disease.

Our Strategies

Support
Support, educate,
and navigate
people at risk
and impacted.

Mobilization
Mobilize networks
of medical
facilities and
partners.

Research
Develop evidence
through people-
centered research.

Investments
Increase federal
investments and
advocate for
better policies.

Engagement
Maximize
communication
and engagement
opportunities.

Sustaining Our Mission: Increase organizational capacity and financial resources.

OUR IMPACT

With your help, we executed core strategies to meet our five key goals:

SUPPORT

Providing Compassionate, Expert Guidance to People Affected by Lung Cancer

At G02 for Lung Cancer, our commitment to providing personalized, high-quality support remains unwavering. In 2024, we expanded the reach and impact of our support programs, empowering more people than ever with the resources, education, and human connection they need to navigate a lung cancer diagnosis for better outcomes.

2024 Impact at a Glance:

125,316
people

in **45 states and 25 countries** received services through the G02 HelpLine, LungMATCH, Lung Cancer Living Room®, and educational resources.

7% overall
increase

in people served

— **60% were new to G02**, showing our continued reach into underserved communities.

— **40% were returning users**, demonstrating sustained trust and value.

99%
satisfaction rate

reflecting the depth of compassion and expertise our team brings to every interaction.



Human Connection Through the Phone Buddy Program

First launched in the early 1990s, the Phone Buddy Program continues to be a lifeline for people newly diagnosed with lung cancer and their loved ones. This unique program pairs individuals with a peer who has lived through a similar diagnosis—offering emotional support, perspective, and often, lifelong friendship.

One such story is that of Jan Maharam, who was matched with a Phone Buddy after her stage IIB NSCLC diagnosis. Her connection was so impactful that she later volunteered to become a Phone Buddy herself. Now, Jan offers her strength and experience to others just beginning their journeys—carrying forward the cycle of hope.

“It was life changing to talk to someone who truly understood what I was going through. Now, I’m proud to offer the same support to others.”

– Jan M.



Lung Cancer Living Room®: A Global Hub for Connection and Education

Through our monthly Lung Cancer Living Room® events—offered both in-person and via live stream—we provide a safe, welcoming space for patients, caregivers, and advocates to engage directly with lung cancer experts. Each event features deep-dive conversations on topics ranging from early detection and treatment advances to quality of life and survivorship.

In 2024:

- More than **48,000 views** worldwide, a **10% increase** from the prior year
- Sessions are archived and available any time through our **Express Learning Library** at go2.org/livingroom



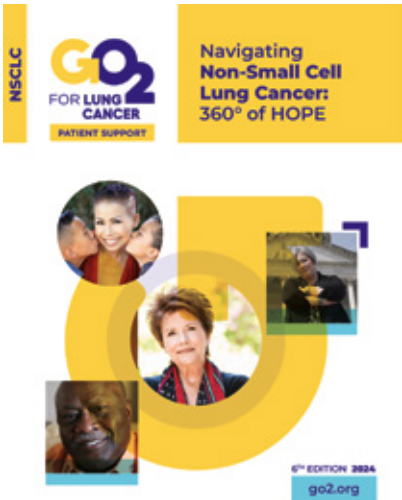
“At the Living Room, I met people like me—people with my exact mutation who’ve lived full lives for a decade or more. I left feeling hopeful, empowered, and informed. That night changed everything.”

– Genevieve S.

Trusted, Accessible Education for All

GO2’s comprehensive educational library includes over 50 plain-language publications covering every aspect of lung cancer—from diagnosis and treatment to living well with the disease. Resources are free of charge, both digitally and in print, and many are offered in Spanish to ensure accessibility. Visit: store.go2.org

Because of your support, tens of thousands of individuals and families received the help, hope, and expert guidance they needed in 2024. Together, we’re making sure no one faces lung cancer alone.



MOBILIZATION

Mobilizing a National Network to Transform Lung Cancer Care

GO2 for Lung Cancer is proud of our Excellence in Healthcare Delivery program. At the heart of this initiative is the Centers of Excellence (COE) - a national network of local community hospitals, clinics, and academic and VA medical centers that foster and promotes the highest-quality early detection and treatment standards in lung cancer.

2024 Highlights in Network Growth and Activation:

- **961 Centers of Excellence** across 45 states and Washington, DC, including **seven Veterans Affairs medical centers**.
- **4 of 10 designations of excellence** launched to validate best-in-class care across the lung cancer continuum.
- **200+ lung cancer navigators and allied health professionals trained** through our flagship Lung Cancer Navigator Workshop.

COE DESIGNATIONS

Lung Cancer Screening
Cancer Care
Incidental Pulmonary Modules
Biomarker Testing
Multidisciplinary Teams
Smoking Cessation
Survivorship
Patient Centric Research
Equity
Community Engagement



“The most amazing opportunity to network with professionals who share your job title and passion for proactively screening and caring for patients with lung cancer. A place to get all your questions answered and to learn about what is coming in the screening world in the future.”

In 2024, we strategically expanded our footprint and deepened partnerships through both regional and national events:

- **Regional summit** in New York connected healthcare providers, community leaders, and Veteran health advocates, especially in under-resourced areas.
- **National COE summit** in Chicago brought together **270 professionals from 35 states and Washington, DC**, focusing on survivorship, early detection, health equity, AI innovation, and quality metrics.
- **Future regional summits** are planned for the Appalachian and Pacific Northwest regions.



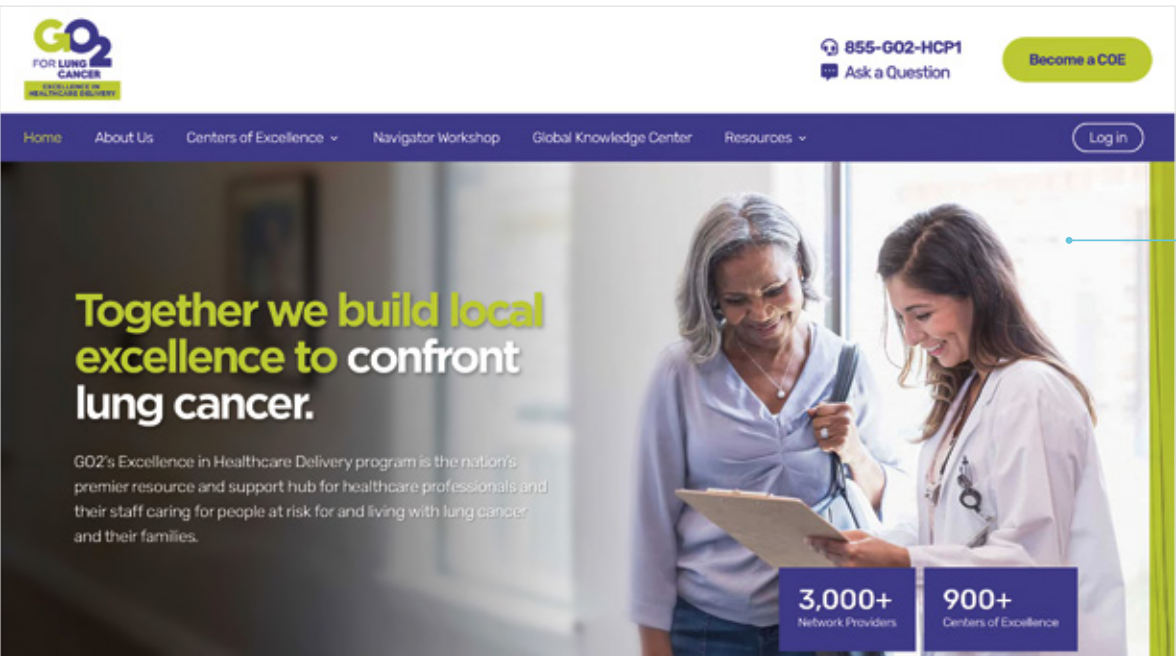
“This is a lung-focused conference that covers an array of topics from a survivor’s point of view to up-and-coming treatment options. No matter what stage your program is treating, there will be something for you to learn.”

Caregiver and Patient Perspective
– Jackie and Charles Erwin

Mobilizing a National Network to Transform Lung Cancer Care

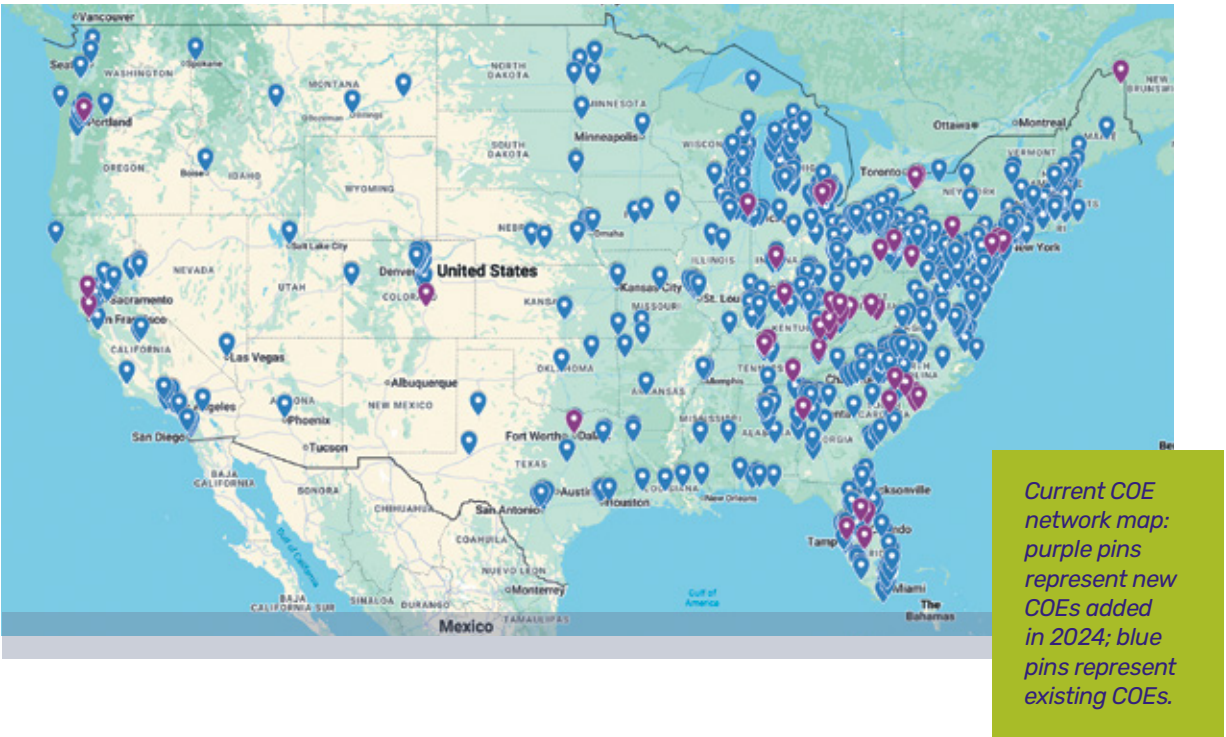
GO2 launched several new tools and systems in 2024 to empower our COE network:

- **New COE healthcare provider website** – A centralized hub for resources, guidance, and clinical updates. Visit: hcp.go2.org
- **COE member portal** – Launched in October 2024 to strengthen engagement and access to best practices.
- **Customer Relationship Management (CRM) system** – Set to launch in Q2 2025 to roll out new COE designation program, streamline COE facility performance data collection, and report on national impact, communications, and resource distribution.
- **Interim impact report survey** – Collected insights in Q4 2024 to measure COE program effectiveness and inform screening and biomarker testing strategies.



Growing and Professionalizing the Navigator Workforce

Our **Lung Cancer Navigator program** tripled participation, training **200+ professionals** in 2024 through in-person workshops and virtual resources. Participants earned continuing education credits, and a **pilot study was launched** to evaluate the training's impact. Additionally, we began developing a **comprehensive lung cancer navigator textbook** for publication and global distribution in Q3 2025.



Expanding Access Where It's Needed Most

GO2 conducted an in-depth geographic analysis to identify high-need areas based on lung cancer risk and access to care. As a result:

- A database of **several hundred healthcare facilities in 24 states** was created, targeting rural and underserved communities for future COE expansion.

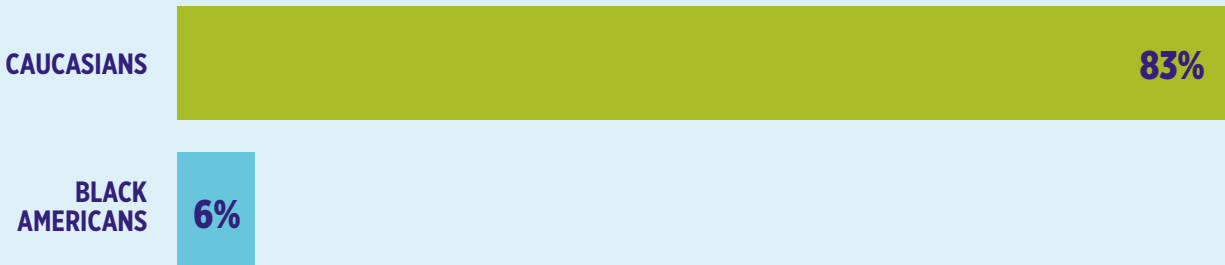
Advancing Lung Cancer Screening

Black Americans face disproportionately high lung cancer mortality rates due to systemic inequities, limited access to care, and longstanding medical mistrust. We launched a culturally tailored outreach effort to address this disparity in a high-risk Tennessee metropolitan area. Highlights included:

- Partnered with 20 local churches identified through geographic and health disparities mapping for culturally informed engagement.
- Empowered faith leaders to serve as trusted messengers for lung cancer education.
- Increased awareness and screening readiness among congregants.
- Established a sustainable model for community-based screening education with plans to replicate it in other high-risk regions to scale impact.

BLACK AMERICANS ARE UNDERREPRESENTED IN CLINICAL TRIALS

The percentages for clinical trials participation are:⁴



Initiated the **Women & Lung Cancer Early Detection Initiative (WomenLEAD)** to better understand lung cancer’s unique and devastating impact on women. This includes exploring a new and innovative combined preventive screening service for the two leading causes of death - lung cancer and heart disease - into one screening encounter to expand lung cancer screening criteria, bring efficiencies to healthcare, and save countless lives.

Supporting Our Veterans

G02’s **Veterans initiative** expanded in 2024 to improve outcomes for veterans, especially those in marginalized and minoritized groups. Major achievements included:

- **Storytelling campaigns** featuring veterans whose early detection changed their lives. Like Buddy, a 12-year lung cancer survivor. After chemotherapy stopped working for him, he began exploring clinical trials and found his miracle drug that produced life-changing results.
- **National COE summit & navigator workshop** spotlighting 12 navigators from 11 VA medical centers.
- **VISN 2 regional meeting in Buffalo, NY**, where 27 stakeholders met to spearhead solutions to effective implementation of VA Directive 1417, addressing lung cancer screening and toxic exposure.

Together, these efforts are building a stronger, more connected healthcare community—and advancing our mission to transform lung cancer outcomes nationwide.



DONNITA

Navy veteran Donnita’s lung cancer was caught at an early curable stage thanks to lung cancer screening. She is grateful to have more time with her grandchildren and advocates for research funding and screening to anyone who will listen!



RESEARCH

Developing Evidence Through People-Centered Research

In 2024, G02 significantly expanded its research portfolio. We reached more people, built strategic partnerships and accelerated progress in early detection, precision medicine, community engagement, and quality of life. These advancements were the results of a shared belief that people—not just data—must be at the heart of discovery.

By the Numbers

13
active clinical, observational,
and community-based research
initiatives

1,518
people enrolled in G02-
facilitated studies

41
research partners nationwide

18
peer-reviewed publications
and scientific abstracts

Precision Medicine & Patient Navigation

G02’s LungMATCH program guided 137 individuals through complex treatment and clinical trial decisions, helping them interpret biomarker results and evaluate their options. Notably, 26% of those supported had small cell lung cancer (SCLC)—a historically underserved group.

Origins Research Initiative

GO2’s **Origins Research Initiative** continued to explore the causes of lung cancer by combining clinical, genetic, environmental, and social data. Collaborating with our strategic partner the Addario Lung Cancer Medical Institute (ALCMI), which is comprised of many community-based and academic centers such as the Dana-Farber Cancer Institute and GO2’s Centers of Excellence network, we are uncovering new risk factors and empowering early intervention.



2024 Highlights:

- **INHERIT Study** (in partnership with Dana-Farber) investigates hereditary risk; more than **425 individuals** expressed interest in participating.



“My mother died of metastatic lung cancer at 38. My sons and I are now part of the INHERIT study. We hope to make a difference in our small way.”

– June S.

- **Young Lung Cancer Study** revealed that young patients with ALK and EGFR mutations lead healthier-than-average lifestyles—prompting a deeper investigation into non-behavioral risk factors.



Stephen H. is a stage IV survivor who participates in our young lung cancer study. He is a dedicated advocate for finding out why people like him are getting lung cancer at such a young age.

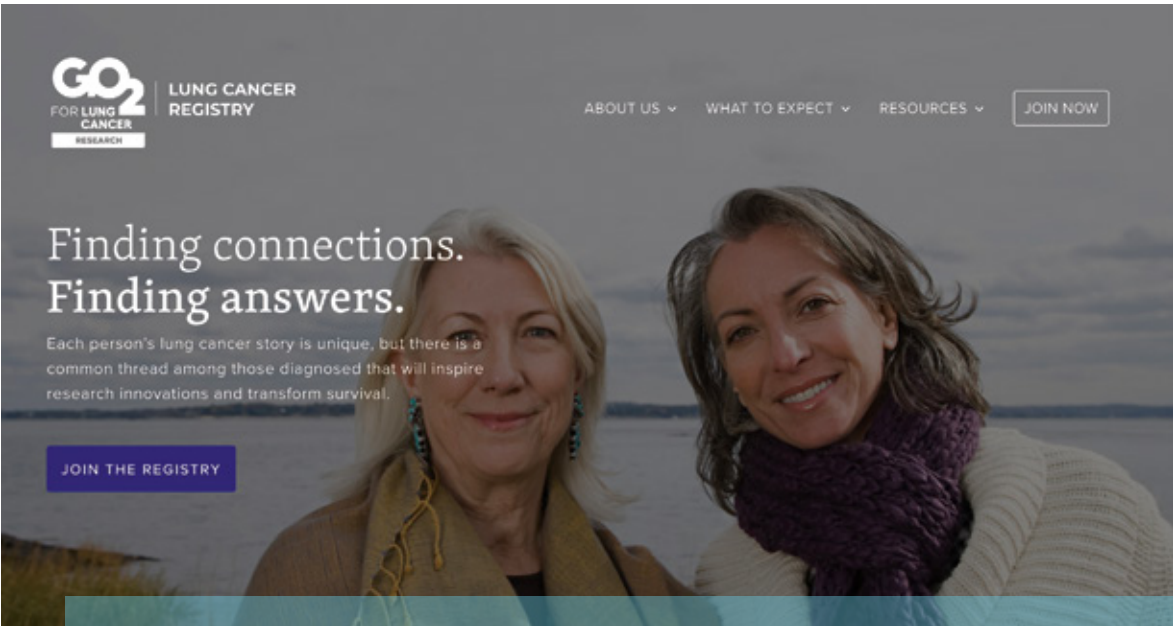
- **Origins Data Hub** development initiated to create an open access platform integrating genetic, imaging, environmental, and clinical data to accelerate global research and discovery.
- **COE network** utilized to raise awareness and disseminate opportunities for scientific partnerships and recruitment of at-risk people and patients.

Real-World Insights: Registry Studies

G02’s Lung Cancer Registry is a global, patient-driven database that collects real-world data from over 2,500 participants in 60+ countries. By sharing de-identified information with researchers and clinicians, the Registry aims to uncover patterns and glean insights that can lead to advancements in treatment and care.

In 2024, Priority Studies Included:

- **ALK+ NSCLC Survey** identified high rates of scan anxiety and a lack of mental health support among patients.
- **SCLC Registry Study** exposed significant gaps in palliative care awareness and education.
- **Emotional Support Survey** found fewer than half of lung cancer patients with depression had access to emotional support—driving efforts to integrate psychosocial care into treatment models.



Community-Engaged Research (CER)

G02 is redefining how research is conducted by embedding community voices into every phase of the process. This collaborative model ensures studies are culturally relevant, trusted, and applicable.



2024 Highlights:

- **Community Advisory Board** of 14 leaders from predominantly Black communities helped shape educational campaigns and program design.
- **Black Voices Storytelling Series** and local workshops in Broward County reached over **350 participants**, spotlighting disparities and driving awareness.
- **Program CONNECT** trained **100+ students** from historically Black colleges and universities to serve as lung cancer navigators and community health advocates.
- **Collaborated with John Hopkins** to study the link between air pollution and cancer mortality; presented findings at major conferences to influence public health policy.

INVESTMENTS

Securing Lifesaving Resources Through Advocacy and Federal Action

G02's advocacy and policy work ensures the lung cancer community is heard and made a priority at the highest level of government.

Thanks to your support, 2024 was a breakthrough year for federal funding investments and legislative process.

Advocacy Achievements:

- **\$25 million in additional federal lung cancer research funding was secured**, bringing the total to **\$245.5 million** – a **1000% increase** from the original \$20 million in 2008.
- **13 states** now offer coverage for comprehensive biomarker testing, making precision care more accessible.
- **150+ federal meetings** conducted to influence policies and funding decisions.
- **Women and Lung Cancer Research and Preventive Services Act**, a landmark effort to address gender disparities in lung cancer research and screening access, was passed by the House of Representatives.



Voices Summit 2024



G02 for Lung Cancer's Voices Summit is the largest annual meeting that brings together people with lung cancer, caregivers, medical professionals, and supporters for education, training, connection, and direct advocacy with the federal government, the largest funder of cancer research.

In 2024:

- **200+ advocates from 31 states** gathered in Washington, DC.
- **Attendees met with lawmakers** to educate them on the importance of increasing lung cancer research funding and understand how policies impact our community's ability to access affordable, high-quality healthcare.

Thanks to your generosity, G02 is not only advancing research and advocacy but also ensuring that these efforts are powered by the people who matter most: patients, families, and communities.

"I didn't know what to expect, but the Voices Summit changed everything. It gave me purpose, strength, and a sense of action. I wasn't alone anymore."

— Grace M.

ENGAGEMENT

Maximizing Communication and Engagement Opportunities

In 2024, G02 produced our first public awareness campaign featuring actor and director Tony Goldwyn, launched various digital marketing initiatives, and strengthened our grassroots efforts to connect with more people than ever before.

By the Numbers:

208%
increase
in website traffic

1,005
new newsletter
subscribers

1.5%
increase
in overall event
participation

106 million
reached by our national
awareness campaign featuring
actor/director **Tony Goldwyn**

700 million
impressions
of G02 messages across
various platforms

923+
new social media followers



Together, We Made a Difference

In 2024, the G02 community showed up in record numbers—from walk/run events to community-driven fundraisers—raising \$1.57 million to drive lung cancer research, education, advocacy, and support services. Every participant, donor, and volunteer helped advance our mission to change the future of lung cancer.

Key Impact Highlights:

- **6,400 participants** across all G02 events
- **\$1.57 million raised** to increase survival
- New fundraising record: **\$78,300** by the TCS New York City Marathon team

COMMUNITY ENGAGEMENT FUNDRAISING EVENTS

G02 National 5K Walk/Runs:

- Held in **seven cities** nationwide, including San Francisco, Philadelphia, and Dallas
- Engaged **4,500+ participants and donors**
- Raised over **\$520,000**

G02 Endurance Team:

- Represented in the **United Airlines NYC Half** and **TCS New York City Marathon**
- **24 runners** raised **\$88,700**

Summer Raise (June 22):

- Engaged **27 states and two countries**
- **200 participants and donors**
- Raised **\$34,800**



TOP FUNDRAISERS OF 2024

Top 5 Individual Fundraisers

- 1 **Ronnie Fong – SF Bay Area 5K**
- 2 **Evy Schiffman – SF Bay Area 5K**
- 3 **Jacob Kahan – TCS New York City Marathon team**
- 4 **Alex Chapman – TCS New York City Marathon team**
- 5 **Jane Millman – SF Bay Area 5K**

Top 5 Fundraising Teams

- 1 **Team Joan**
- 2 **Team Neil SoloZip PLUS**
- 3 **Jim’s Joggers**
- 4 **Immaculate Conception/ Padre Abdias**
- 5 **Jane’s Gang**



Community Fundraisers

Thanks to passionate individuals and families, GO2 benefited from **11 major community fundraising events** and countless others in communities nationwide.

Events Included:

- Tamalpais Aquatic Master's 2024 Miracle Mile Postal Swim (Nationwide)
- Rodney Wellman Memorial Cornhole Tournament (PA)
- Jordan Nathan's Bat Mitzvah Project (GA)
- The Follen Angels presented by Upstage Lung Cancer (MA)
- 15th Annual Jog for Jill presented by Kappa Kappa Gamma at UC Berkeley (CA)
- Leo Rice School Fundraiser (DC)
- 2nd Annual Franco Tarm Memorial Golf Tournament (CA)
- Nancy Lee Grahn Fan Club Fundraiser (CA)
- Pat Pritchard's 80th Birthday (CA)
- 4th Annual Leonard Cabeceiras Memorial Golf Tournament (MA)
- Kate Micucci Art Show (CA)
- Bob Neary Lung Cancer Walk (TX)
- Carlos Cares (MA & NY)
- GE Vernova Digital Technology Charity Auction (GA)

\$135,000 raised



Shine a Light on Lung Cancer®

In November 2024, GO2 for Lung Cancer hosted its 16th annual Shine a Light on Lung Cancer®, the world's largest coordinated lung cancer awareness program. This signature event connected thousands of individuals to lifesaving education, screening resources, and survivorship support.

Key Highlights:

- **255 events** held across all **50 states, Washington DC, and Ireland** at hospitals, Veterans Affairs medical centers, and community partners
- **17,100+** individuals engaged through events
- **67%** of host sites returned from 2023, showing strong retention
- **Events included** speaker sessions, educational tables, virtual programming, and giveaways

Shine a Light Events Were Hosted In Hundreds of Cities Including:

- Boston, MA | Dallas, TX | Spokane, WA | Bronx, NY | Charlotte, NC | Omaha, NE | Honolulu, HI | Reno, NV | West Haven, CT | Akron, OH
- Strong presence at VA medical centers, including in-person events across all three VA Boston campuses. Veterans, families, and staff shared personal stories, accessed resources, and learned more about screening and prevention.



"It was great to connect with veterans and families...the Shine a Light resources were valuable for everyone."

– Julie W., Boston, MA

"We reached over 132 individuals with our educational table at the Dallas VA."

– Andrea S., Dallas, TX

GO2 Excellence Awards

GO2 for Lung Cancer celebrated its 19th annual **Simply the Best Gala** on November 2, 2024, at the Fairmont Hotel in San Francisco. This signature event honored organizations and individuals who contributed significantly to the lung cancer community, including survivors, caregivers, industry partners, and advocates. We gratefully recognized the following awardees:

- **Novocure:** GO2 Excellence Award in Advancing Innovative Precision Medicine
- **Tony Goldwyn:** GO2 Rays of Hope Award for Excellence in Community Engagement and Awareness
- **U.S. Department of Veterans Affairs:** GO2 Excellence Award in Advancing Early Detection
- **Jacqueline “Jackie” Erwin:** GO2 Caregiver Award for Excellence in Improving Quality of Life



Carolyn Clancy, M.D., MACP, Assistant Under Secretary for Health, Discovery, Education & Affiliate Networks, Veterans Health Administration and Joelle Fathi, DNP, RN, ARNP, CTS, FAANP, FAAN, Chief Healthcare Delivery Officer, GO2 for Lung Cancer.

Jackie & Charles Erwin and Danielle Hicks, Chief Patient Officer, GO2 for Lung Cancer.

Courtney Granville, PhD MSPH, Chief Scientific Officer, GO2 for Lung Cancer and Frank Leonard, EVP and President, Novocure Oncology.

We also recognized excellence at GO2’s annual **Lung Cancer Voices Summit**. Congratulations to these dedicated 2024 award winners:

- **Christine Conti, RN, ONN-CG**, our Lung Cancer Support Group Facilitator awardee. Christine was recognized for her twelve-year dedication to leading and maintaining her support group in Pasadena, California.
- **Cliff Norton (in memoriam)**, our Volunteer Advocacy Award recipient, was a dear friend to many and a fearless lung cancer advocate. He was known for his grit, grace, and determination to bring lifesaving change for people impacted by lung cancer.

Global Lung Cancer Awareness Movement (LCAM) Coalition

Stewarded by GO2, LCAM is a growing global alliance dedicated to raising awareness of lung cancer.



In 2024, the Coalition evolved from a primarily North American network to a **year-round global movement**, now engaging nearly **50 partners** across **the Middle East, Asia-Pacific, Europe, and the Americas**.

Global Reach & Campaign Highlights include:

- Hosted a global networking event at the **World Conference on Lung Cancer (WCLC)** in San Diego to brought coalition partners and advocates together to collaborate on global lung cancer solutions
- Developed a **social media toolkit** to empower global advocates with shareable content and global lung cancer facts available in 5 languages (English, French, Italian, Portuguese and Spanish)
- Conducted **global digital awareness campaigns**
 - August–October Campaign engaged **18,300 users** across **79 countries**, generating 24,000+ visits to lcam.org
 - Social media video ads had a **3x higher click through rate** than the industry average
 - Lung Cancer Awareness Month (October–December)
 - Ran in **six countries**: Argentina, Chile, Canada, U.S., Australia, and New Zealand
 - Achieved **42.7 million+** total impressions
 - Drove **101,000+ clicks** and **4.5 million** social media engagements
 - YouTube **ads have been viewed over 614,000 times**



Stories of Hope

and Strength



"I will continue advocating and spreading the word about getting screened early, getting involved with other lung cancer survivors, and joining an organization like G02 that gives encouragement and hope. Having hope is so very important. It reminds you that you are not alone and that there are many people out there researching and advocating for treatments and cures for you."

*- Jim F.,
U.S. Navy veteran, Lancaster, South Carolina*



"And at the end of the day, I may have cancer, but cancer DOES NOT have me."

- Jaymie K., Fort Washington, MD

"Running my 40th marathon as part of G02 was deeply meaningful."

-Grace, Los Angeles, CA

An avid marathon runner, Grace was diagnosed with no risk factors but lost both her parents to lung cancer, indicating a possible genetic risk for the disease. Grace signed up for our INHERIT study and ran the New York City marathon as part of G02 for Lung Cancer's endurance team.



"People are often surprised to find out how normal my life is with lung cancer. They sometimes even call me inspiring or incredible for going to work or participating in life while living with lung cancer, but I am just living my regular life. In fact, having a normal life is a good distraction. I take pills twice a day, so it's not like I can forget I have lung cancer, but at the same time, it's only taking pills with breakfast and dinner. It's incredible, really. Only four pills twice a day allow me to feel good, be positive, and live a regular life."

- Craig S., Washington, DC

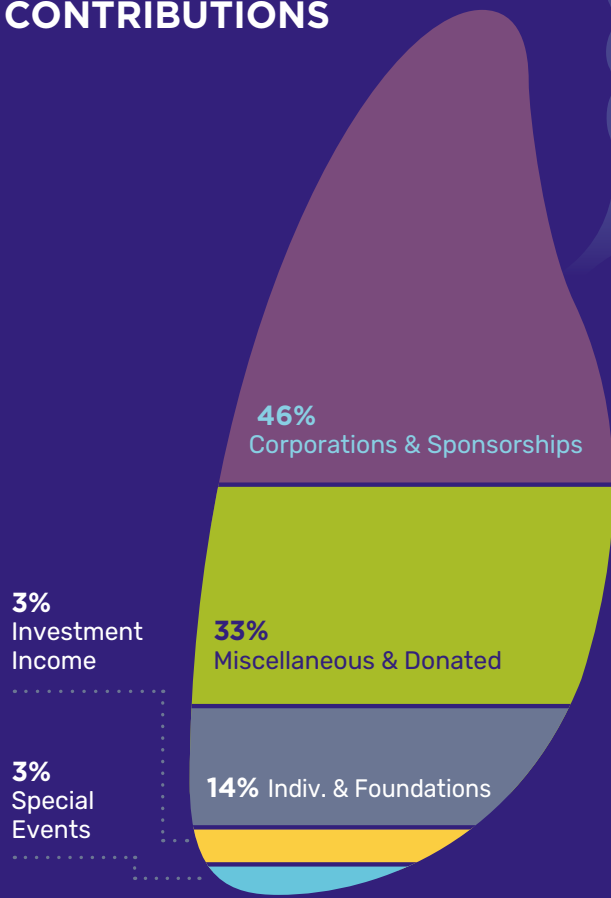


FINANCIALS

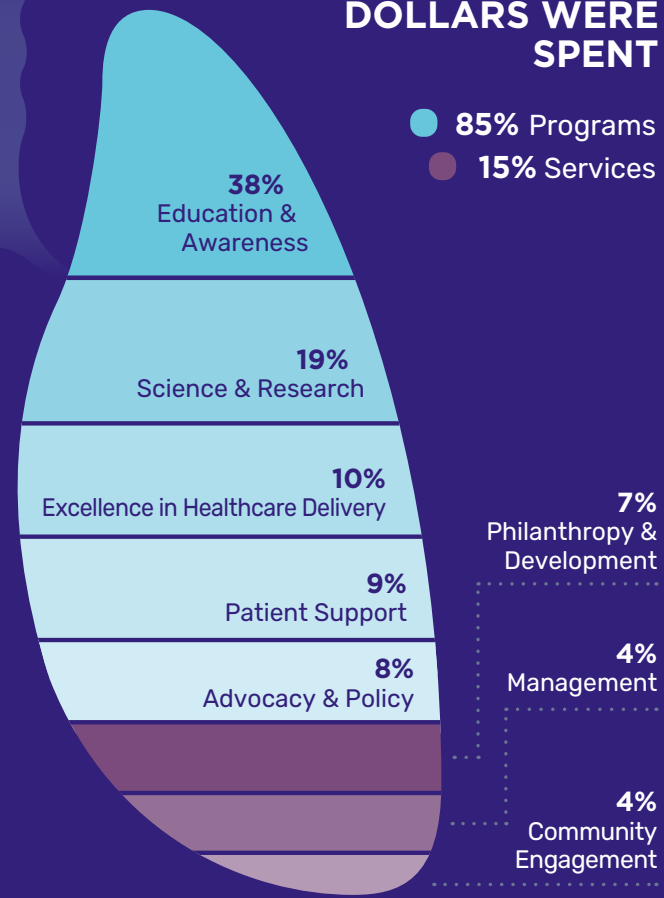
Your Contributions at Work

Eighty-five percent of every dollar donated advanced our work in Patient Support, Research, Excellence in Healthcare Delivery, Advocacy & Policy, Education & Awareness, and Community Engagement. Your support fuels progress, powers community, and provides hope. Thanks to you, we confront lung cancer on every front, every day, for everyone to increase survival.

YOUR CONTRIBUTIONS



HOW YOUR DOLLARS WERE SPENT



85% Programs
15% Services

\$17,791,689 Total Revenue
\$22,498,835 Total Expenses
\$11,515,139 Net Assets



Give with confidence
Give with confidence - Eight consecutive years receiving the highest rating and among 10% of most effective charities in the nation (as rated by Charity Navigator).



GO2 2024 BOARD OF DIRECTORS

Board Chair

Adrienne Halper

Former Managing Director of Private Equity Funds
New York, NY

President and Chief Executive Officer

Laurie Fenton Ambrose

Co-Founder
Washington, DC

Vice Chair

David Lefkowitz

Retired Partner, Weil, Gotshal & Manges LLP
New York, NY

Secretary

Carol Rattray

Co-Founder and President, Rattray Kimura Foundation
New York, NY

Treasurer

Lisa Poulin

Principal, Deloitte CRG, Retired
Chesapeake Beach, MD

Audit Chair

Richard Sherlock

Major General, United States Army, Retired
President & CEO, The Association of
Air Medical Services
Alexandria, VA

Bonnie J. Addario

Co-Founder, Board Chair Emeritus
San Carlos, CA

Fern Halper, PhD

VP, Research and Sr. Research Director for
Advanced Analytics, TDWI
New York, NY

Marsha B. Henderson

Retired, Associate Commissioner for Women's
Health at the Food and Drug Administration
Washington, DC

Andrea Parks

Managing Partner,
Addario Family Limited Partnership
San Francisco, CA

Johanna Ralston

Chief Executive, World Obesity Federation
London, United Kingdom
New York, NY

GO2 2024 SCIENTIFIC LEADERSHIP BOARD

The Scientific Leadership Board is comprised of leaders in lung cancer research and across the care continuum that provide recommendations for leadership and staff to guide program and project development in support of GO2’s mission.

Chair

Christine M. Lovly, MD, PhD
Associate Professor of Medicine,
Vanderbilt University Medical Center

Early Detection Committee

Debra S. Dyer, MD, FACR
Professor and Chair, Department of Radiology,
National Jewish Health

William R. Mayfield, MD, FACS
Thoracic Surgeon; Chief Surgical Officer,
WellStar Health System

Peter Mazzone, MD, MPH, FCCP
Director, Lung Cancer Program, Respiratory Institute,
Cleveland Clinic

Jacob Sands, MD
Physician, Instructor, Dana-Farber Cancer Institute,
Harvard Medical School

Douglas E. Wood, MD, FACS, FRCSEd
The Henry N. Harkins Professor and Chair,
Department of Surgery, University of Washington

Vice Chair

William R. Mayfield, MD, FACS
Thoracic Surgeon, Chief Surgical Officer,
WellStar Health System

Biomarker Testing and Precision Medicine Committee

Trever Bivona, MD, PhD
Professor, University of California, San Francisco

Hossein Borghaei, DO, MS
Professor and Chief, Thoracic Oncology,
Fox Chase Cancer Center

Karen Kelly, MD
Professor of Medicine, Associate Director for
Clinical Research, University of California, Davis
Comprehensive Cancer Center

Christine Lovly, MD, PhD
Associate Professor of Medicine (Hematology/
Oncology), Ingram Associate Professor of Cancer
Research, and Co-Leader, Translational Research
and Interventional Oncology Research Program;
Vanderbilt University Medical Center

Kathryn F. Mileham, MD, FACP
Chief, Section of Thoracic Oncology,
Atrium Health – Levine Cancer Institute

Luis E. Raez, MD, FACP, FCCP
Medical Director & Chief Scientific Officer; Memorial
Cancer Institute, Memorial Health Care System;
Clinical Professor of Medicine; Herbert Wertheim
College of Medicine, Florida International University

Natasha Rekhtman, MD, PhD
Attending Pathologist, Thoracic Pathology & Cyto-
pathology, Memorial Sloan Kettering Cancer Center

Community Engagement Committee

Jan M. Eberth, PhD, FACE
Associate Professor of Epidemiology and Director,
Rural and Minority Health Research Center,
University of South Carolina Arnold School of
Public Health

Jhanelle E. Gray, MD
Department Chair, Program Leader & Senior
Member, Thoracic Oncology; Co-Leader Molecular
Medicine Program, Moffitt Cancer Center

Drew Moghanaki, MD, MPH
Professor of Radiation Oncology, David Geffen
School of Medicine at UCLA, Chief of Thoracic
Oncology Section; UCLA Department of Radiation
Oncology; Staff Physician, Veterans Affairs Greater
Los Angeles Healthcare System

Jamie S. Ostroff, PhD
Chief, Behavioral Sciences Service,
Memorial Sloan Kettering Cancer Center

Ray U. Osarogiagbon, MBBS, FACP
Chief Scientist; Director, Baptist Memorial
Healthcare Corporation; Multidisciplinary Thoracic
Oncology Program, Baptist Cancer Center

Alison Mayer Sachs, MSW, LSW, CSW, OSW-C, FAOSW
Director, Community Outreach & Cancer Support
Services, Eisenhower Lucy Curci Cancer Center

Quality of Life Committee

Pamela Samson, MD, MPHS
Assistant Professor, Department of Radiation
Oncology, Washington University in Saint Louis

Jamie L. Studts, PhD
Professor, Division of Medical Oncology; Scientific
Director, Behavioral Oncology, University of Colorado
School of Medicine

Kerri B. Susko, LISW-CP, OSW-C
Counselor, Center for Integrative Oncology and
Survivorship & Director, Cancer Support Community,
Prisma Health Cancer

Jennifer Temel, MD
Professor of Medicine, Harvard Medical School;
Director, Cancer Outcomes Research and Education
Program, Massachusetts General Hospital

GO2 2024 NATIONAL AMBASSADOR COUNCIL

The National Ambassador Council is comprised of lung cancer survivors, patients, caregivers and advocates that provide input on GO2’s strategies to effectively advance GO2’s mission.

Barney Brinkmann
Carmichael, CA

Anne Charity-Hudley, PhD
Stanford, CA

Denise Cutlip
Ypsilanti, MI

Shelly Engfer-Triebebach
Osakis, MN

Larry Gershon*
Palo Alto, CA

Bob Nicklas
Takoma Park, MD

Jim Pantelas
Howell, MI

Evy Schiffman
Foster City, CA

Juanita Segura
Chicago, IL

Karen Withrow
Sunnyvale, CA

*In memoriam

SUPPORTERS

Thank you to our donors that make our work possible to confront lung cancer on every front, every day, for everyone. We are proud to recognize the following donors whose generosity exceeds \$2,500.

\$100,000+

AbbVie
Amgen
AstraZeneca
Boehringer Ingelheim
Bristol Myers Squibb
Bristol Myers Squibb Foundation
Daiichi Sankyo
The Geaton and JoAnn DeCesaris Family Foundation
Eli Lilly and Company
Genentech
Google
Johnson & Johnson
Kokua Na Lani
Kaaren Kurtzman*
Stephen Lukashevich*
Merck
Novartis
Novocure
Regeneron
Michael and Wendy Smith
Taube Family Foundation
Van Auken Private Foundation

\$10,000 - \$24,999

Arcus Biosciences
Blueprint Medicines
Jana K. Brownell
Leah Cabeceiras
City of Hope National Medical Center
Costco Wholesale Corporation
Dr. Shane Dormady and Nitze Dormady
The Draper Foundation
Dreams33 Foundation
Ronnie and Stephanie L. Fong
Mary Ellen and Andrea Geisser
Huntington National Bank
Medscape
Kate Micucci
Minjee La
Joseph Niehaus and Erica Plumb
Jonathan and Lynn Norton
Nuvalent
Niteen Patkar and Amita Jain
Mike and Melina Pellini
Paula C. Perry
Pharmaceutical Research and Manufacturers of America

\$50,000 - \$99,999

Tony and Bonnie J. Addario
Sam and Janet Bain
Ruth P. Cohen*
Dhanam Foundation
Foundation Medicine, Inc.
Gilead
Jazz Pharmaceuticals
Google Matching Gifts Program
GRAIL
Cary Hart*
Pankaj Patel
Pfizer
Frank and Denise F. Quattrone
Takeda
David Turner

Quality Chain Corp.
The Rogers Foundation
Arthur N. Rupe Foundation
Phyllis R. Sizoo
Whitney and Jeff Spagnola
Taiho Oncology
Summit Therapeutics
Trump, Alioto, Trump & Prescott LLP
John S. Underdown*
University of Miami-Sylvester
Comprehensive Cancer Center
Vevo LLC
The WRG Foundation
Diana Wu

\$5,000 - \$9,999

David and Sandy Berman
The Beveridge Family Foundation, Inc.
Joan Braddi
Brian and Jennifer Brake
Cerity Partners
Community Foundation of New Jersey
Kevin and Jennifer Connolly
Edmund Coyne
Yogen and Peggy Dalal

\$25,000 - \$49,999

Addario Family Limited Partnership
Bayer
Leica Biosystems
Florence Courtright Lucas Gift Fund
Bruce and Janice Ellig
Hackensack Meridian Health
Ralph A. Korpman
David S. Lefkowitz
John Letzelter
Memorial Healthcare System
Memorial Sloan-Kettering Cancer Center
Patient-Centered Outcomes Research Institute
Evy G. Schiffman
Dan and Lynne Trump
Karen M. and Jim Withrow

DELFI Diagnostics
Howard and Shirley DeLong
Dignity Health
Biodesix
PMV Pharma
Thynk Health
Joelle T. Fathi
Harry Feinberg Family Foundation
Sonny and Bill Findley
JAD Family LLC
Gregg C. Gibson
Groebner Family Foundation
Rev. Abdias Gonzalez C.O.R.C.
Courtney Granville, PhD, MSPH
Adrienne Halper
Shelley Heeder
Matthew Hill Foundation, Inc.
The Holtzmann Fund
Arthur N. and Linda Hoppe
Geoff Kuli
Carolee Lee
Michael Levinthal
Melissa Lim, M.D.

MD Anderson Cancer Center
Median Technologies
Pamela Meltzer
Andrew & Rev. Mary H. Naegeli
Nucleix
Nancy Pape
Barbara Parkman
Julie Pollitz
Puma Biotechnology
Jean Sieper
Raymond Stern
John & Junie Sullivan
Alan Swenson
Wendy Van Auken & Matthew Sugarman
Thomas Family
Special Purpose Fund
University of California Davis
University of Colorado Denver

University of Pennsylvania Health System, Penn Medicine
USC University of Southern California
Douglas Warner
WebMD
Rodney Wellman
Memorial Fund
Timothy Won
Betsy Wong

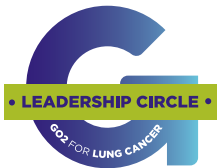
\$2,500 - \$4,999

Anonymous
Jane Abbott
Shahram Ameli
Apple Matching Gifts Program
Noah Arliss
Ina & Steve Bauman
Tito Bianchi

Adam Brown & Adrienne Hancock-Brown
David & Natasha Calomese
Mike Canha
Capital Group Co Charitable Foundation
Grace Chan
James & Karilyn Collini
Emily Conley
Dr. Michael Conte
Sven de Jong
Charles T. & Kori Faulkner
Jack L. Fong
Brad Foster
Fox Chase Cancer Center - Temple Health

Karen & Tom Gammiere
Nancy Lee Grahm
Kevin Hannon
Martin E. Harband
Brad & Cindy Inloes
Craig Johnson
Dr. Paul & Sujatha Kalanithi
Vinay Kini
Sandra Landfield
Aaditya Landge
Michael Lawrence
Tirza Ruth Mathew
Rick & Tina M. McCarter
Kirstie McCarter & Lindsey Husband
Vincent A. Miller, MD
Catherine Murdock
Bradley Newton

Harrison Nguyen
Nvidia
Maria E. Patterson
Jeff & Jessica Perry
Jon Pettinelli
Cynthia & Dennis Pettinelli
Steve Philpott
Lisa Poulin
Steven & Lara Raich
Nancy Rizzo
Rosse Family Charitable Foundation
Ronald Stoney
Sutter Health Valley Division
Siddharth Taneja
Steve Torres
Stephen Vislocky
&Catherine Mendoza
Sheila M. Von Driska



Thank you to these donors that commit an annual gift of \$1,200 or more to allow us to accelerate innovation in supportive services, advocacy, awareness and patient-centered research to transform survival.



We are grateful to our Legacy Club members who have named GO2 in their will or estate plans to sustain our lifesaving work for years to come.

Jane Abbott
Lynda Allera
Ina & Steve Bauman
Clyde & Kay Beffa, Jr.
David M. & Sandy Berman
Solna Braude
Jana K. Brownell
Kevin Burley
David P. Carbone, MD, PhD
Debra Casillas
Eileen Clinton
Judith Coady
Martha Cole
Sharon M. Corazzini
James & Samantha Cordon
Edmund Coyne
Annie-May de Bresson
Howard & Shirley DeLong
Barbara Eggert
Charles T. & Kori Faulkner

Ronnie L. & Stephanie Fong
Jana W. & Bill Gandy
Rochelle & Thomas Gay
Mary Ellen & Andrea Geisser
Brian Gregory
Adam Brown & Adrienne Hancock-Brown
Shelley Heeder
Dr. Audrey Heimler
Susan Herzberg, MD
Arthur N. & Linda Hoppe
Sujatha & Paul Kalanithi
Stephen R. Lax
Jimmy Lee
Lamar Leland
John Letzelter
John Lloyd, III
Thomas J. & Nancy Lopez, USN (Ret.)
Gary Lorden

Doris & Maynardo Mendoza
Shannon Murphy
Andrew & Rev. Mary H. Naegeli
Terry Nickerson
Barbara Parkman
Maria E. Patterson
Nicole H. Perry
Aled Roberts
David T. Rusch
Evy G. Schiffman
Kurt C. Schindler
Ashley & Eric Seidman
Robert M. & Sheryl Shea, USMC (Ret.)
Colleen K. & Brian Sturdivant
Alan Swenson
Tonya Tedrick
David L. Turner
Jeff A. & Mimi Wentworth
Diana D. Wu

Jane Abbott
Philip Ardell
Steve & Ina Bauman
Barbara Benedict
Michael Bobier
Jennifer & Scott Boyles
Rose Marie Brantley
Peggy Cameron
Estee Coldwell
Natalie Eddy
Bruce & Janice Ellig
Ileana Estrada
Fr. Christopher Flesoras
Elaine Gage
Adrienne Halper
Amalia Harper
Brandy Hindersman
David Hoffman
Stacy Kaufman
John & Audrey Krahne
Kaaren Kurtzman*
Lois Levin
Deborah D. Loesel
Jan Maharam
Joan McKay*

Andrew & Rev. Mary H. Naegeli
Paula C. Perry
Julie Pollitz
Lisa Poulin
Laura Rockwell
Evy G. Schiffman
Teresa Schrul
Laurie Seligman
Karen Shore
Anthony Tai
Jeremy Taylor
Lisa and Kevin Tinsley
David Turner
Gary Wasden
Nicole Westmore
Stanley Zalewski

*In memoriam

GO2 is at the forefront of everything that's happening in lung cancer.

30 YEARS

serving as the “go-to” for our community

99%
four-star
rating from
Charity Navigator



Among
10%
of highest performing
U.S. charities

3 LEADERSHIP BOARDS:

National Board of Directors

National Scientific Leadership Board

National Ambassador Council

2 PRINCIPAL OFFICES
in San Francisco and Washington D.C.

Learn more at go2.org



Confronting Lung 
Cancer Starts Here®

GO2 for Lung Cancer relentlessly confronts lung cancer on every front, every day, for everyone. Founded by patients and survivors, GO2 is dedicated to increasing survival and quality of life for those at risk, diagnosed, and living with lung cancer.

Email us at support@go2.org, contact us at [1-800-298-2436](tel:1-800-298-2436), or visit go2.org.