



Breaking Down Barriers To Save Lives

Whatever it takes – Whatever the need – We get it done together

Empower Everyone.
Ignore No One.



Working Locally, Impacting Globally

Founded by patients and survivors, GO2 Foundation transforms survivorship as the world's leading organization dedicated to saving, extending, and improving the lives of those vulnerable, at risk, and diagnosed with lung cancer.

Our Focus. Our Impact. Our Reach.



Delivering access to 24/7/365 life-changing patient information and support services for the 10 million individuals at risk and living with lung cancer.

- Expanding comprehensive HelpLine and online support services to provide 1:1 personalized access to professional support, treatment, and clinical trial specialists. We serve more than 350 patients, caregivers, and providers every month.
- Bringing hope, support, and the latest research, diagnostic, and treatment information via the national Living Room series broadcasting direct to homes locally and globally, reaching an average of 16,000 people per month.
- Connecting communities with the GO2 Belong mobile app and Health Unlocked online platforms—with 3,000 members and growing.
- Delivering the latest educational information and resources to empower treatment and survivorship decisions by distributing 16,000 publications every month to provider networks and patients.
- Conducting innovative education on risk and life-saving preventive screening by targeting primary care providers and at-risk populations through pilot programs in Kentucky, Georgia, and Florida with an audience reach of 25.9 million.
- Piloting state-wide screening and care programs in underserved communities through programs initiated in Alabama with 30+ community health advisors in the field.
- Navigating hundreds to biomarker testing, clinical trials, and personalized information to highlight best treatment pathways via LungMATCH.



Advancing patient-centered world-class academic and community-based research that spans the continuum of care.

- Linking patient data from more than 1,600 participants in the GO2 Lung Cancer Registry to provide the research community with new tools and research platforms to fuel breakthroughs and cures.
- With a sister organization, the Addario Lung Cancer Medical Institute (ALCMI), conducting one-of-a-kind research studies like the genomics of young lung cancer.
- Running multiple patient-driven, biomarker-specific research studies that will lead to more personalized treatments with better outcomes.
- Conducting and publishing on longitudinal community and stigma surveys to understand gaps and inform strategies to improve survivorship and access to care.



Empowering millions to take direct advocacy action to achieve historic increases in federal research funding, new treatment approvals, and better access to high-quality care.

- Establishing lung cancer as a national public health priority with a coordinated and comprehensive plan to address every aspect of the disease.
- Increasing annual federal research funding by leading the “\$20 Million by 2020 Campaign” for the Lung Cancer Research Program that totals \$141.5 million from FY09-FY19. Legislators received more than 4,000 advocate letters.
- Reintroducing the “Women and Lung Cancer Preventive Services and Research Act” in Congress with the endorsement of more than 20 public health interest groups. The Act will accelerate research, early detection, and national awareness for those at risk, highlighting women.
- Advocating for improvements in health care delivery systems that maintain affordable coverage, improve patient outcomes, provide access to high-quality care, bring lower costs and keep pace with innovative research.
- Advocating for changes in the regulatory environment that accelerate drug approvals and provide adequate coverage and reimbursement for services and care.



Expanding access to excellence in screening, care, treatment, and survivorship to ensure that our community benefits from life-saving services closer to home.

- Expanding Centers of Excellence in Screening and Continuum of Care beyond the current 700+ network hospitals that meet the highest criteria for multi-disciplinary best practice care in community-based settings across the country.
- Providing resources, study opportunities, and technical assistance to the global community with screening, survivorship, research, and quality care programs through the Global Lung Cancer Coalition (GLCC) and International Association for the Study of Lung Cancer (IASLC).
- Developing novel informed decision-making materials and interactive videos for providers to share with at-risk patients to understand the screening process.
- Expanding screening coverage and reimbursement benefits to hundreds of thousands of others at high risk identified as National Comprehensive Cancer Network (NCCN) Group 2.
- Offering assistance to the Department of Veterans Affairs to provide access to screening, educational tools, and technical assistance for at-risk veterans.



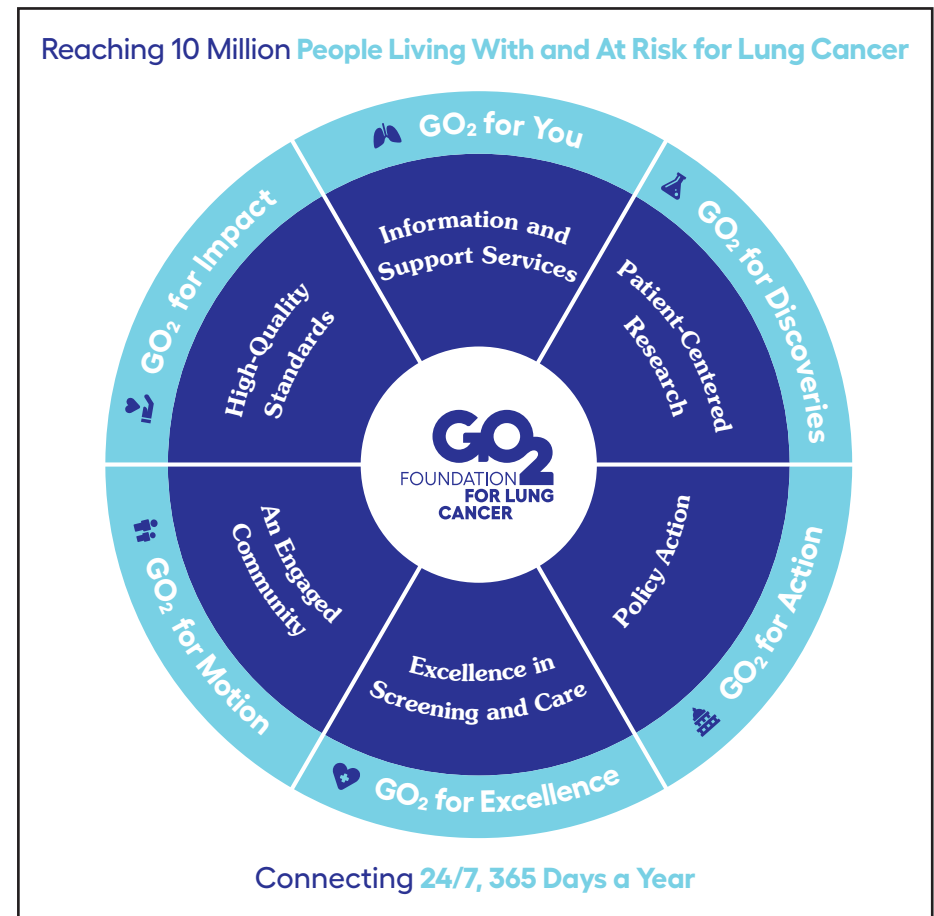
Building, connecting, and engaging our community across the country and around the globe.

- Bringing together more than 15,000 patients, survivors, caregivers, loved ones, advocates, and providers each year through our national walk/run and awareness event series.
- Bridging connections and breaking news that impacts our community through our weekly newsletter, which reaches 70,000 subscribers.
- Reaching millions with innovative social media awareness campaigns around screening and stigma.



Striving for excellence in every facet of our work

- Driving public and private collaboration to accelerate progress.
- Sharing knowledge and resources through international consortia.
- Consistently meeting the highest ethical and transparency standards as rated by the leading charity watchdog groups.





The GO₂ Foundation transforms what it means to live with lung cancer and increase the patient survival rate of the world's number one cancer killer annually. **Together we break barriers and save lives.** ””

Bonnie J. Addario

Lung Cancer Survivor, Co-Founder and Chair of the Board of Directors



We are on the cusp of early detection and treatment breakthroughs that will forever alter the future of the disease. We harness energy to reach people with life-saving, personalized care and comprehensive services that **'Empower Everyone, Ignore No One.'** ””

Laurie Fenton Ambrose

Co-Founder, President and CEO

To make a donation, please contact Kevin Schaeffer
kschaeffer@go2foundation.org

GO₂ Foundation for Lung Cancer
San Francisco Bay Area
1100 Industrial Road, Suite 1
San Carlos, CA 94070
650-598-2857

GO₂ Foundation for Lung Cancer
1700 K Street, NW, Suite 660
Washington, DC 20006
202-463-2080

info@go2foundation.org

**GO₂ FOUNDATION
FOR LUNG CANCER**