

**GO<sub>2</sub>**  
FOUNDATION  
**FOR LUNG  
CANCER**

**MONTHLY**  
**MEASURE**  
*Insights into Programs and People*



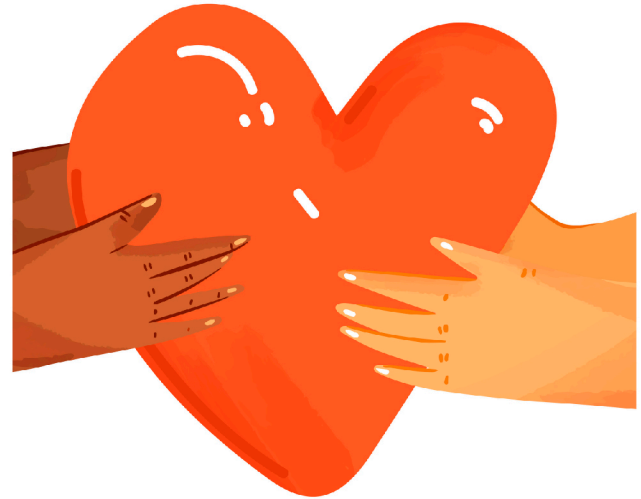
# May 2021

**Help People Impacted  
by Lung Cancer**

**GET INVOLVED**

# A Family Contributes to the Lung Cancer Cause

When Geaton, patriarch of the family and their “rock” passed from lung cancer, the DeCesaris family began donating to GO2 Foundation for Lung Cancer to heighten awareness about the disease, raise additional funds, and connect people with resources. We interviewed JoAnn DeCesaris Wellington about the family’s involvement with lung cancer and GO2 Foundation.



[READ MORE](#)

# A Focus on Women and Lung Cancer

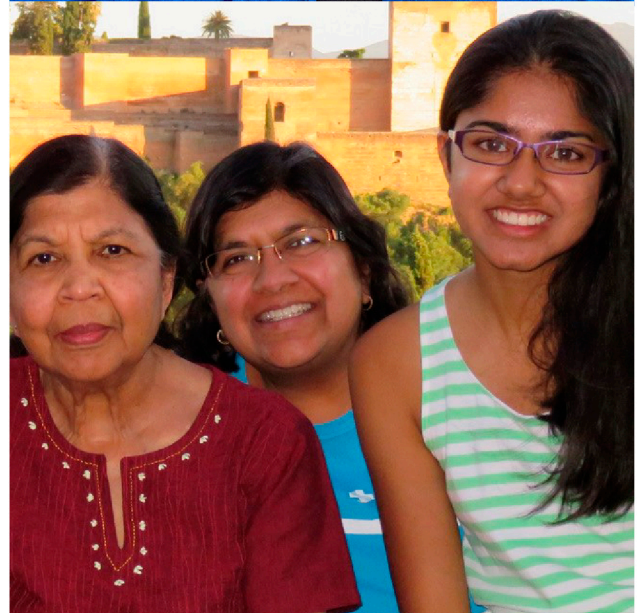


May is Women's Health Month, and we have partnered with the Addario Lung Cancer Medical Institute to investigate how and why some young women's rates of lung cancer are increasing, despite never having smoked. Watch the video from GO2 Foundation's Dr. Andrew Ciupek to learn more.



# The Impact of Lung Cancer Across Generations: One Family's Story

Lung cancer doesn't just impact one person—it affects all those who love them. Perhaps no family understands this better than the Jain-Patkar family. Meet Usha Jain, a retired professor in the Department of South and Southeast Asian Studies at UC Berkeley and the author of the definitive textbooks for teaching Hindi. During a trip to Spain in July 2018 she started suddenly coughing in a concerning and uncontrolled way. She came home and was diagnosed with Stage IV lung cancer.



[READ MORE](#)

## **Why are young people getting lung cancer?**

The Epidemiology of Young Lung Cancer (EoYLC) study seeks to identify common risk factors among younger lung cancer patients to help researchers crack the code on a young lung cancer diagnosis.

**LEARN MORE**



[READ MORE](#)

## Treatment Insights for KRAS Mutated Non-Small Cell Lung Cancer

Many patients diagnosed with non-small cell lung cancer (NSCLC) will also have a mutation for their cancer. These mutations have unintended consequences that can spur a cancer's growth and development. The KRAS mutation is found in 20-25% of NSCLC patients, making it the most common mutation in NSCLC.



# Spend Your Summer with Us!

Help us double-down on survival by participating in one or more of our fundraising events with GO2 Foundation this summer. Each event is open to the entire lung cancer community. No matter where you live, you can join in and help fund programs aimed towards doubling lung cancer survival!



[READ MORE](#)

[VIEW UPCOMING EVENTS](#)

# About Us

Founded by patients and survivors, GO2 Foundation for Lung Cancer transforms survivorship as the world's leading organization dedicated to saving, extending, and improving the lives of those vulnerable, at risk, and diagnosed with lung cancer.

**DONATE TODAY!**

# Contact Us

Email: [info@go2foundation.org](mailto:info@go2foundation.org) | HelpLine: 1-800-298-2436 (9-5 EDT)

## **Washington, DC**

Phone: 202-463-2080

## **San Francisco Bay Area**

Phone: 650-598-2857